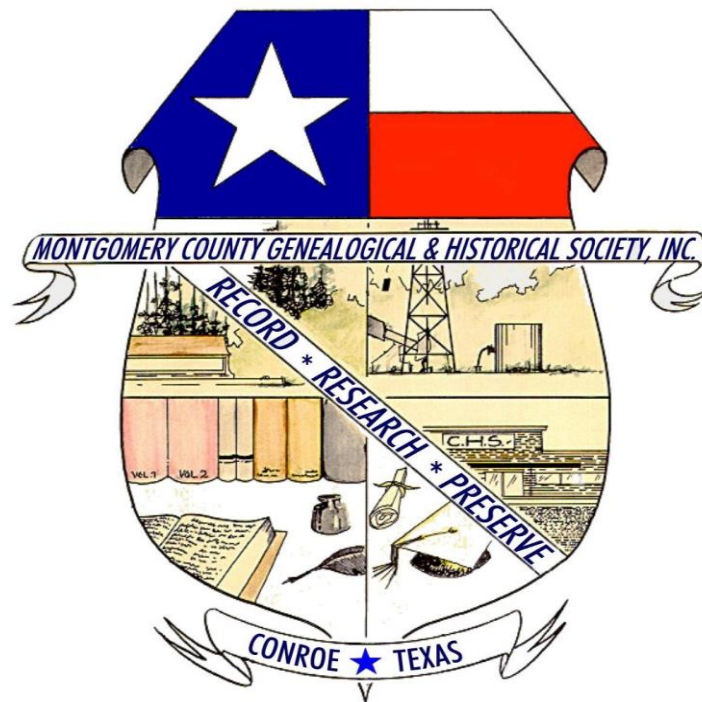


*The Montgomery County Genealogical  
and  
Historical Society, Inc.*



The Herald  
Winter 2017

# *Contents*

Our Purpose .....	3
Our Officers and Directors.....	3
President's Message .....	4
A Reminder From our Membership Vice President.....	5
How to Begin Your Genealogy .....	6
Library Corner .....	8
Upcoming Events at MCMLS Genealogy:.....	9
Remember This Guy?.....	11
Society Happenings .....	12
What's in a Name? .....	13
Product Reviews .....	15
Texas Genealogy Events.....	16
National Events .....	17

# *Montgomery County Genealogical and Historical Society*

P. O. Box 867 Conroe, TX 77305

Email: MCGandHS@gmail.com

## **Our Purpose**

The purpose of this organization shall be to locate, research, record, preserve and publish genealogical and historical records, to promote public awareness of genealogy and knowledge of genealogical research through education, and to support the genealogy department of the Montgomery County Memorial Library, the official repository of all original records held by the Society.

## **Our Officers and Directors**

### **Officers**

*President*

Emery Heuermann

*First Vice President, Programs*

Fran Ellsworth

*Second Vice President, Publicity*

Vacant

*Third Vice President, Membership*

Larry Litle

*Treasurer*

Faye Stallings

*Recording Secretary*

Elizabeth Heuermann

*Parliamentarian*

Frances Peoples

*Librarian*

Vacant

### **Directors**

*Director at Large, Position 1, Chaplain*

Brad Wall

*Director at Large, Position 2, Meeting Room Arrangements*

Vacant

*Director at Large, Position 3, Pledges and Flags*

Carol Cryar Palmer

*Director at Large, Position 4, Awards*

Vacant

*Director at Large, Position 5, Hospitality*

Bob Scamman

# President's Message



December 6, 2016 ~ Wow! What a tremendous year 2016 has been. Much has happened to tell you about, but first—a huge *Thank You* to all the volunteers for their hard work. I would particularly like to recognize Faye Stallings, our Treasurer, for her tireless work to keep the business affairs of the Society in order. And what a fantastic job Fran Ellsworth has done with the programs. Not only did we have an outstanding slate of speakers in 2016, but she has speakers already scheduled for all of 2017. I'd also like to thank Bob Scamman for furnishing the refreshments and snacks at all of our meetings, and Larry Litle who set up our membership structure to a rolling year instead of a calendar year and maintains the membership data base. Other volunteers who have worked so hard this year include Frances Peoples, Brad Wall and Carol Cryar Palmer.

Okay, now for a few of the changes. The major change this year has been relocating our regular meetings from the Central Library to the Precinct 3 South Montgomery County Community Center. Commissioner Noack and his Assistant Ms. Jeanne Stewart have been so helpful in this transition and have gone out of their way to make us feel welcome. We have met at the library from late 1977 to early 2016 so our decision wasn't made lightly. We really had no choice but to look elsewhere. Scheduling and reliability of having a room to meet in has long been a problem, but in 2016 it became a major issue. Our new meeting location is wonderful. It has tables with chairs, lots of room and is convenient to about a 100,000 people in The Woodlands area. Plus we can meet till 9:30 instead of 8:30. Lots of pluses. But, because one of our main purposes is supporting the Genealogy Department at the Montgomery County Library, we'd like to hope that we can return to meeting there on a regular basis in the future.

We welcomed Mr. Carl Smith, the new Genealogy Department head in 2015 as well. He has been such a treasure to work with. We wish him the best of luck as he guides the Genealogy Department forward. He has some nice projects in mind that we would like to be a part of. Now, all we need is you—our members and volunteers—to accomplish this!

Speaking of the Genealogy Department and projects, we are in our fourth year of honoring our goal to donate \$1,000 to The Courier digitization project. Carl Smith spoke to us in September about the progress of that effort, and we want to be a continuing part of seeing it finished. We presented installment #3 of 4 to him at the Holiday Party on December 8th.

There are so many other things to bring you up to date on but I will save that for next issue. One item that I must mention though is the return of *The Herald*. A huge Thank You to Faye Stallings and Fran Ellsworth for volunteering to take on this project. It is no small matter. This is the

inaugural return issue and aptly named, "New Beginnings." I am sure *The Herald* will be as interesting to members as it was in the past. Don't miss an issue, make sure your dues are current. It's the only way we can pay for the printing and mailing. Once again, Thank You to Faye and Fran for your efforts to bring *The Herald* back.

This new year of 2017 for MCG&HS is a time to take our society to the next level. As with all genealogy societies, membership is crucial. Active members are even more crucial. I hope you will take a few moments to consider joining our Society or renewing your existing membership. Dues are only \$25.00 per rolling year and we would love to have you come aboard. There is a membership application enclosed.

Elections of new officers will be held in late 2017, so now is the time to begin acquainting yourself with the Society if you would like to serve as an officer, director, or committee member.

Thank you for your reading time and until the next issue, in the words of Paul Harvey, "I bid you a good day".

*Emery Heuermann*  
*Society President, 2016-2017*

### ***A Reminder From our Membership Vice President***

To all our loyal members of Montgomery County Genealogical and Historical Society, this is the time of year that your annual membership dues are up for renewal. The annual dues are \$25.00 for single and family memberships.

Although we now offer a rolling membership for new members that runs annually from the month that you join, most of our current members fall within the January thru December time frame.

To renew your membership, please complete the membership form at the end of the newsletter and send it with your check to Post Office Box 867, Conroe, Texas 77305.

On behalf of the MCGHS Board of Directors, I thank you for your continued support.

*Larry D. Litle*

# *How to Begin Your Genealogy*

## **Beginning**



Since our theme for the inaugural return of *The Herald* is “New Beginnings,” we thought some of our members might be interested in a refresher course on how to begin our genealogy endeavors. Sometimes, if we have put our genealogy work aside for a while, we might struggle with how to begin again.

The first step is to start with what we have. This may seem like an obvious step, but it’s one we don’t always follow. Sometimes we like to grab an idea from the air—such as, I want to find my Cherokee princess ancestor. And then we go on a hunt down many rabbit trails with no framework to guide us. In reality, we need to start with what we KNOW about our ancestors. Begin with the facts and work your way step by step backwards in time.

If you are just getting started in this endeavor, starting with the facts means starting with you and your parents. Gather all of your vital documents—birth certificates, marriage certificates, and any other records that document the milestones in your life. Once you’ve gathered the information about your immediate family, record what you’ve learned. To do this, you can use pedigree charts or family group records that can be obtained online, or you can use a genealogy software program.

The next step is to decide what you want to know. Your research should always begin with a question. Do you want to find a particular person or find the date or place of a significant event in their life? Once you know what question you are seeking to answer, you can begin your search for the specific records that might provide the answer. Be thorough in your search and understand the records that you are searching. It’s important to consider the source of the information contained in the record. Did the person providing the information have a basis for knowing the information? Was the record created at the time of the event or many years later? These factors can affect the reliability of the information.

Make sure to record what you find and where you found it so that you don’t repeat work you have already done and others can come along later and understand the work you have completed.

For more information on how to begin your genealogy, you can check out the following resources:

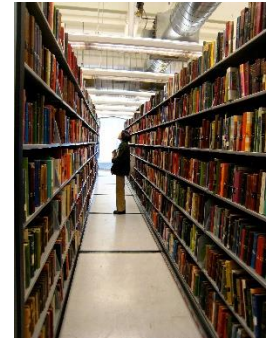
- Dick Eastman has written "A Genealogy Intro" in his *Eastman's Online Genealogy Newsletter* (<https://blog.eogn.com/2016/06/02/a-genealogy-intro/>). This article is full of advice on how to get started in genealogy.
- *Cyndi's List* provides numerous links to various articles and websites that provide beginners' tips and techniques (<http://www.cyndislist.com/beginners/beginners-guides-hints-and-tips/>).
- In its Learning Center, *FamilySearch* offers numerous how-to videos, many of them quick 5-minute learning opportunities, for beginning genealogists (<https://familysearch.org/learningcenter/home.html>).



# Library Corner

By Carl Smith, Genealogy Librarian – Montgomery County Memorial Library

Welcome to the Library Corner! 2016 has been a busy year for the staff and volunteers at the genealogy library. We are proud to say that in 2016 we have seen our best attendance in the past eight years, with more than 3,344 visitors utilizing the department this year as of the end of October and still two months left of the calendar year to go! You might ask yourself, "Why all the crowds?" Well, like Shoeless Joe Jackson said in *Field of Dreams* "If you build it, they will come." Our staff and volunteers have worked hard this year in processing new materials, creating indexes for our microfilm and microfiche collection, and extracting obituaries from our local paper. We have also hosted many workshops and presentations on a variety of genealogy topics which have attracted many new faces. People are coming to research and learn!



We are also pleased to announce that thanks to the generous donation from the Montgomery County Historical and Genealogical Society we were able to send off four additional reels of our *Conroe Courier* microfilm to be digitized by the Portal to Texas History. Once completed all extant editions of the *Conroe Courier* from 1893 to 1922 will be available for free online for researchers all across Texas. By creating high-resolution digital copies of these papers we can ensure that this wonderful source material is available for researchers in the decades and centuries to come.

And last, but certainly not least, due to a surprise increase to our microfilm budget this year, we were able to obtain two exciting new series of microfilm that will serve as a boon to researchers and genealogists interested in Texas:

- ***Texas as province and republic, 1795-1845 : as based on the bibliography by Thomas W. Streeter(39 reels)*** : a collection of over 1661 imprints related to the early history of Texas that formed a part of Thomas W. Streeter's extensive Americana collection. Divided into three series : Texas imprints, Mexico Imprints, and U.S. & European Imprints this collection contains primary source materials taken from books, broadsides, letters and newspapers related to the founding of Texas till it became the 28<sup>th</sup> state in the United States of America.
- **NARA Series T890: Extension Service Annual Reports: Texas 1909-44 (30 reels)** : "Each U.S. county had (and still has) an agricultural Extension Agent, who focused on helping farmers learn about and adopt new scientifically based agricultural practices; a Home Demonstration Agent, who helped rural housewives improve their home



economics skills; and a "4H" agent devoted to youth education and activities focusing on agricultural and home economics skills they would need as an adult. Each county agent submitted an annual report. Naturally, content varies, depending upon what information the county agent(s) chose to include. Some are more detailed than others. Sometimes photographs were included." (From *Agricultural Extension Service Annual Reports, 1909–1968* by Claire Prechtel-Klusdens, National Archives, Washington DC). MCMLS genealogy has acquired all the rolls for Montgomery County (which include additional counties that fall next to Montgomery Alphabetically).

Again, we are grateful for the assistance from volunteers, researchers and individuals who have helped us have a wonderful year. Come pay us a visit and see all the new happenings for yourself! –CJS

### **Upcoming Events at MCMLS Genealogy:**

Saturday January 14<sup>th</sup>, 2017 : 1-2:30 PM

#### **Land Lubbers-Ahoy! Uncovering the Genealogical Treasures From Land Records**

A-hoy! Come join the Dread Pirate-genealogist Carl for an overview of using Land records in your research. Topics will include types of land records and where to find them, state-land states vs public land states records, Texas land records, and more. Yargh!

Thursday January 26<sup>th</sup>, 2017 : 2-3:30 PM

#### **Grassroots Genealogy: Using USGenWeb, RootsWeb, PERSI & More**

While large genealogy databases like Ancestry.com and FamilySearch often take the spotlight, they aren't the only place to find useful one-of-a-kind genealogical information online. Come join the MCMLS Genealogy Department for a special presentation on Grassroots Genealogy, and learn about the thousands of free sites, hosted by the local little guys, that can provide the missing information that you've been hunting for!

Wednesday February 15<sup>th</sup>, 2017 : 3-4:30 PM

### **Discovering the Women in Your Family Tree**

None of us would be here today if it weren't for our mothers and grandmothers! What better way to pay tribute to them than to learn about their lives and contributions to families and societies thru time. Join the MCMLS Genealogy Department for a special presentation on finding the women in your family tree, with topics ranging from source to consult, legal ramifications related to women, and methodology and best practices to discover more about all those ladies in your family tree!

March 23<sup>rd</sup> 2017 : 6:30 – 8 PM

### **Evaluating Evidence: Getting the Most Out of Sources & Managing Conflicting Information**

The world of family history research can be riddled with problems. Are you not sure which of the four John Stevens living in the community was your ancestor? Join Genealogy Librarian Carl Smith for a hands-on workshop on how to evaluate sources. Come learn how to extract the most information that you can from important record types, find new leads, and deal with conflicting evidence you may encounter in your research!



ngel



PHILLIP 66 COWBOY--Dwarfs ribbon cutting ceremonies at Cole's 66 Service Station held Friday morning. The new station, at 729 West Davis in Conroe, is owned and operated by David Cole. Taking part in Friday's ceremonies are (from left) Montgomery County Chamber of Commerce Embassy Club members Frank Zachry, Oliver Kneistey, Don Hammock, Mrs. Sandra Cole, David Cole holding baby Dana Sue, and Embassy Clubbers Pat George, Don Buckalew and Glynn McClellan. Dave Nichol of the club served as master of ceremonies.

## REMEMBER THIS GUY?

He stood tall and proud at 729 West Davis in Conroe where he was erected at the Cole's 66 Service Station, but he, along with many of his kind, are long gone.

Phillips 66 initiated an ad campaign in the 60's with the slogan "Go with Phillips...the gasoline that won the west."<sup>1</sup> And this guy, erected at many stations across the country, became iconic during a period when Americans took to the roads for adventures across the country.

For a map on where to see the remaining Cowboy "muffler men," as well as other types of muffler men (and gals), see the website *Roadside America* (<http://www.roadsideamerica.com/map/theme/86>).

<sup>1</sup> Roger Bywater, *American Giants-Muffler Men*, "The Phillips 66 Cowboy" (<https://usagiants.com/2013/04/18/the-phillips-66-cowboy/>; accessed 22 December 2016).

## ❧ *Society Happenings* ❧

On December 8, the Montgomery County Genealogical and Historical Society had its annual Christmas gathering. December for many of us is a month of giving. So it was with the society. Through a financial donation, we were pleased to be able to support the following organizations that also share a mission of preserving the history of our county:

*Genealogy Department of the Montgomery County Library*

*The Heritage Museum*

*Montgomery County Historical Commission*



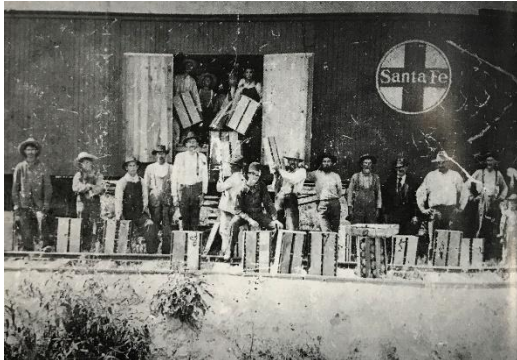
# *What's in a Name?*

## *People and Places*

by Faye Jenkins Stallings

Years ago when my family first moved to Montgomery County, we lived in a community that was set off of a narrow, windy road called Honea Egypt. What a strange name for a road, I thought. Do you ever think about the names of streets and roads? Why was that name chosen? Today, we see many communities formed and commonly their streets' names have a theme. But what was most common for our older streets and roads was to see them named after people or places. And, come to find out, that is exactly how Honea Egypt Road got its name.

Honea Egypt Road connected two communities called—yes, you've got it!—Honea and Egypt.



Farmers loading produce at Honea Switch  
(photo courtesy of The Heritage Museum)

According to the Texas State Historical Society, Honea was one of many communities that sprang up when the lumber business began its boom in Montgomery County.<sup>1</sup> After the decline of certain agricultural crops, like tobacco, Montgomery County became home to a flourishing timber industry by 1890. The railway had enabled the transportation of lumber to growth areas of the country and, consequently, the lumber business rose to become one of Montgomery County's main industries.<sup>2</sup> Located on the land that was first patented by Theodore Bennett in 1838, Honea sprang up near such a facilitating rail line that today parallels 2854 near Fish Creek.<sup>3</sup> But unfortunately, the timber boom would not last, and just as Honea was born with the lumber business, it died with the lumber business.

Egypt, once located in the area of FM 2978 and 1488, used to be a thriving sawmill community. Originally established in the 1840's as a farming community, it also grew to later support the timber industry in the area around 1870.<sup>4</sup> The area was first farmed by George Bell

---

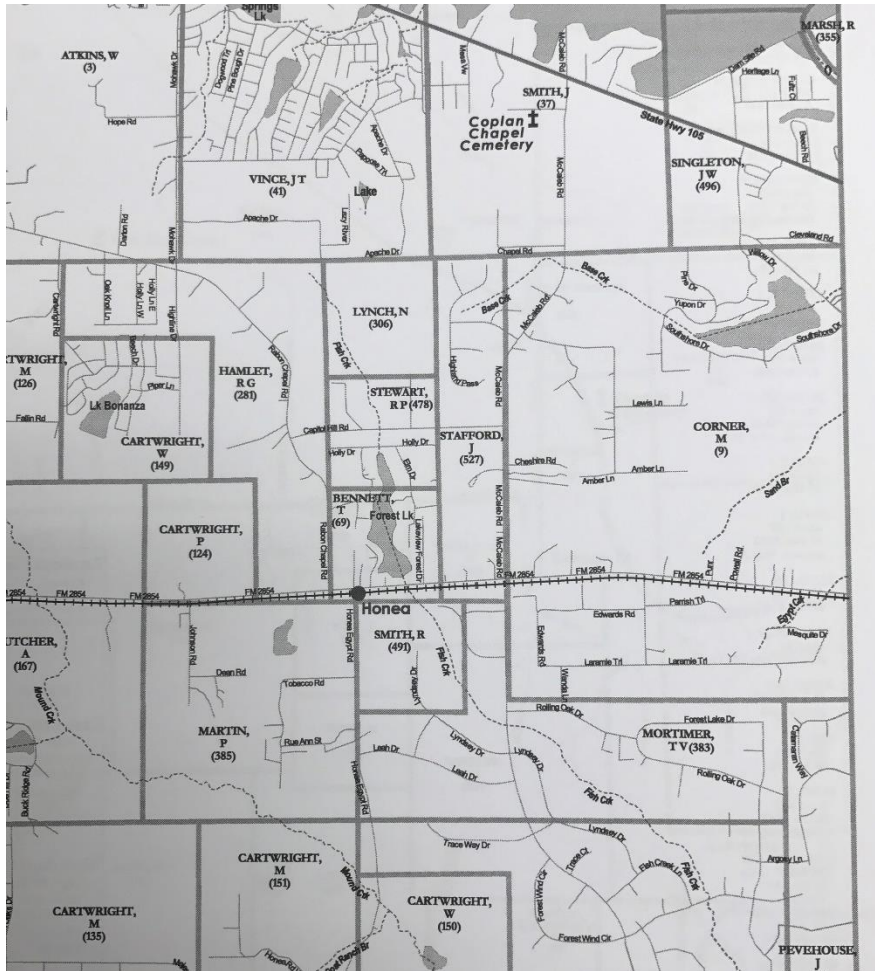
<sup>1</sup> Christopher Long, Texas State Historical Society, *The Handbook of Texas*, "Montgomery County," (<https://tshaonline.org/handbook/online/articles/HRE73> : accessed 7 November 2016)

<sup>2</sup> Robin Navarro Montgomery, *Historic Montgomery County: An Illustrated History of Montgomery County, Texas* (San Antonio: Historical Publishing Network, 2003)

<sup>3</sup> Gregory A. Boyd, *Texas Land Survey Maps for Montgomery County* (Norman, Oklahoma: Arphax Publishing, 2013)

<sup>4</sup> Laurie E. Jasinski, Texas State Historical Society, *The Handbook of Texas*, "Egypt, Texas," (<https://tshaonline.org/handbook/online/articles/HRE73> : accessed 7 November 2016)

Madley of England. In addition to the crops that he grew, he also operated a grist mill and wine press. People in the surrounding area would bring their grain to the grist mill to have it ground into meal or flour and in compensation they paid Madley what is known as a “miller’s toll,” which was a percentage of the grain that was ground. It is believed that the community got its name during a period of significant drought. At that time, Mr. Madley helped out his neighbors by sharing some of his cornmeal, just like Joseph of Egypt did, according to the Bible in Genesis 41:56-57.<sup>5</sup>



Survey map identifying location of Honea overlaying original land grants  
Source: *Texas Land and Survey Maps for Montgomery County*



*Are there any names—people or places—that you would like to know more about? Send your requests to [fstallings172@gmail.com](mailto:fstallings172@gmail.com).*

<sup>5</sup> Heritage Museum of Montgomery, “Town of Egypt, Montgomery County Texas,” ([http://www.countygenweb.com/txmontgomery/town\\_egypt.htm](http://www.countygenweb.com/txmontgomery/town_egypt.htm) : accessed 7 November 2016).

# *Product Reviews*

## *Legacy Family Tree Webinars*

by Faye Jenkins Stallings

Interested in increasing your knowledge of genealogy without ever leaving your house? And doing it for free? Then you need to check out Legacy Family Tree Webinars. Millenia Corp., the maker of the popular Legacy Family Tree genealogy software, also promotes genealogy learning with its webinar program.

On average, Legacy Family Tree Webinars offers six webinars each month. To participate, you can register for the webinars you are interested in by going to their home page at <http://familytreewebinars.com/>. Once you have registered, you will receive a link sent to your email address that allows you to log-in from your computer or mobile device. If you log-in via this link and watch the presentation live, there is no cost to view the webinar. Yes, unbelievably it's free! But even if you are unable to watch it live, recordings of the presentation are usually available for free for seven days after the live event.

To access the content at any time, including all past presentations, requires a subscription. You can choose between either a monthly or an annual membership. The monthly membership costs \$9.95 but provides access to the entire library for that month. An annual membership generally costs \$49.95, but can often be purchased at a discount, usually 10%, following a live presentation or at certain times of the year (e.g., holidays). You can also purchase individual webinar downloads for \$9.95, but for that price you may as well get the monthly membership. The monthly and annual memberships also entitle you to a 5% discount off of items in the Legacy Family Tree shop.

And, considering that the content can be accessed without cost for the live presentations and at a very reasonable price for an annual membership, the education that is offered is high quality. The presenters are varied and are typically well-known in the genealogical community. Many of the presenters are those we often see at the national genealogical institutes, including Thomas Jones, Judy Russell, John Phillip Colletta, and Elizabeth Shown Mills, just to name a few. Altogether, there are presentations by over 130 presenters. And the variety of topics is also very impressive. General topics include BCG skill-building, methodology, technology, and a variety of record types. There are over 450 presentations to choose from as of the end of 2016. However, given the increasing use of DNA in genealogy and its complexity, it's disappointing that they currently only offer one course on the topic.

In addition to watching the webinars, a syllabus is usually provided and can be downloaded for each presentation. The syllabus provides tips that can be easily referred to long after you have viewed the presentation.



## ❧ *Texas Genealogy Events* ❧

### ***Houston, Texas – January-February 2017***

The Houston Genealogy Forum is hosting Beginning Genealogy Classes at the Clayton Library Guest House, 5300 Caroline, Houston, TX. The classes will be held for six Saturdays in January and February, starting January 14, 2017.

For more information, see the Houston Genealogy Forum website at:

<http://hgftx.org/registration-for-genealogy-classes/>

### ***Houston, Texas – January 21, 2017***

The Clayton Library will hold its monthly orientation in which it will cover how to begin a family history project, will review the resources available at the Clayton Library and their organization, and discuss how to plan an effective visit to the Clayton Library.

### ***Dallas, Texas – March 18, 2017***

Dr. Thomas W. Jones, co-editor of NGSQ since 2002 and author of Mastering Genealogical Proof will be featured at the Dallas Genealogical Society Spring 2017 Seminar. Dr. Jones has over forty years of research and teaching experience. He is a popular lecturer at genealogical institutes. The Spring 2017 Seminar will be held March 18, 2017 @ 9:00 AM - 5:00 PM at the J. Erik Jonsson Central Library, 1515 Young, Dallas, TX 75201

For more information, see the Dallas Genealogical Society website at:

<http://dallasgenealogy.com/dgs/meetings-events/seminars/2017-spring-seminar-with-tom-jones/>

### ***Austin, Texas – May 22-25, 2017***

The Texas Institute of Genealogical Research will be held at the Thompson Conference Center at UT Austin. This is the first ever week-long genealogy institute focused solely on Texas records. Stay tuned for more information.

### ***Houston, Texas—October 20-22, 2017***

The Texas State Genealogical Conference will be held this year in Houston at the Omni Houston Hotel. Featured speakers will include Dr. Michael Lacopo, D.V.M. and J. Mark Lowe, CG.



## ❧ *National Events* ❧

The **Salt Lake Institute of Genealogy** will be held *January 23-27, 2017* at the Hilton Salt Lake Center in Salt Lake City, Utah, within walking distance of the Family History Library. Most classes are already sold out, but if interested, you can find out more at <http://ugagenealogy.org>.

The **2017 National Genealogical Society Conference** will be held *May 10-13, 2017*, in Raleigh, North Carolina. For more information, see their website at <http://conference.ngsgenealogy.org/>.

The **Genealogical Research Institute of Pittsburgh (GRIP)** will offer two sessions this year at the LaRoche College in Pittsburgh, Pennsylvania. First session will be *June 25-30, 2017*, and the second session will be *July 16-21, 2017*. For more information see <http://www.GRIPitt.org>.

The **Institute of Genealogy and Historical Research (IGHR)** has moved to Georgia. It will be held *July 23-28, 2017*, in Athens, Georgia. For more information see <http://gagensociety.org>.

The **2017 Federation of Genealogical Societies Conference** will be held *August 30-September 2, 2017* in Pittsburgh PA. For more information, see their website at <http://fgs.org/cpage.php?pt=43>.





# Montgomery County Genealogical and Historical Society, Inc.

P.O. Box 867 Conroe Texas 77305

www.mcgandhs.com

## 2017 Membership Application

Membership is for 12 months, commencing from date of acceptance. Membership can include up to two separate names in the same family, living at the same address. Note: please answer all questions and print all information.

**Please Circle an Answer to the following questions:**

- Yes No This is a new membership.  
Yes No This is a renewal membership.  
Yes No I/We would like to receive MCG&HS information online  
Yes No I/We would like to receive MCG&HS information by the Postal Service.  
Yes No May we publish your membership contact information in our annual booklet and website.  
Yes No May we publish the surnames you are researching in our newsletters and website.

**Membership Dues:**

- \$10.00 Student Membership (*age 17 or less*)
- \$25.00 Family Membership (*spouse or other family member must reside at same postal address*)
- \$30.00 Public or Private Libraries, Historical or Genealogical Associations
- \$50.00 Business or Corporate Membership

**Date:** \_\_\_\_\_

**Primary Member**

Name: \_\_\_\_\_

Address: \_\_\_\_\_

City: \_\_\_\_\_ State: \_\_\_\_\_ Zip Code: \_\_\_\_\_

Email: \_\_\_\_\_

Primary Phone: \_\_\_\_\_ Cell Phone: \_\_\_\_\_

Surnames being Researched: \_\_\_\_\_

Occupations: \_\_\_\_\_ Hobbies: \_\_\_\_\_

**Family Member Name #2:** \_\_\_\_\_

Email \_\_\_\_\_

Primary Phone: \_\_\_\_\_ Cell Phone: \_\_\_\_\_

Surnames being researched: \_\_\_\_\_

Occupations \_\_\_\_\_ Hobbies \_\_\_\_\_

Please make your check payable to MCG&HS and mail along with this application to: MCG&HS, P O Box 867, Conroe, TX 77305

Date Rec: _____
Amount: _____
Check No.: _____